

We share challenges



Action: concrete results RDF

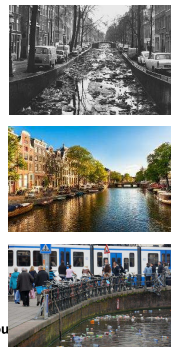
- Stakeholder analysis
- Assessment of the local situation
- Identifications of ambitions
- **Cleaning up solid waste that floats in the river**
- Initiate behavioural changes to prevent river pollution
- Improving the drainage system
- **Education: public awareness (waste management, circular economy)**
- Implementing innovating nature based solutions
- **Monitoring of water quality by means of low-cost sensors in the river**
- Evaluation & governance

share your talent. move the world.

Lessons learnt The Netherlands

how did we achieve this Waterquality?

- Determine situation & ambitions
- Regulations
- Education: public awareness
- Cleaning up emissions
 - Improving the sewer system
- Monitoring
- Waterquality improvement
- Evaluation & governance
- Lessons learnt: RDM approach

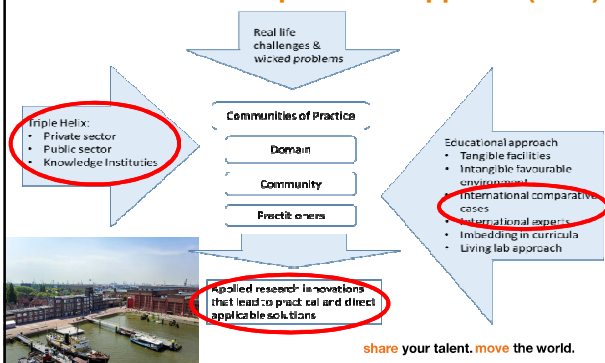


share your talent. move the world.

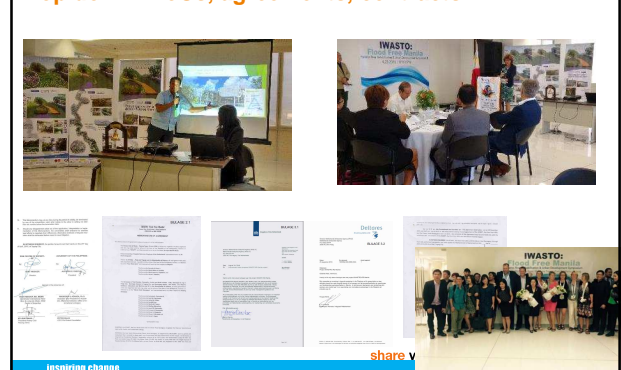
Stakeholder analyses & engagement Top down and Bottom up



The RDM-approach 'Research Development Philippines' (RDP)



Stakeholder analyses, engagement and commitment Top down: MoUs, agreements, contracts



China Dragon eats waste material

Save the world.



CONCLUSIONS

- RDManila was effectively established
- The 'Meet in the middle' strategy resulted in engagement of all stakeholders
- Concrete results:
 - New monitoring methods are developed and water quality is mapped
 - Tailor made solutions designed and implemented
 - Longanisa to catch waste
 - Next step is micropollutants trap (treatment trains)
- RDManila implementation resulted in interest around the world.
- Upscaling and implementation in the upcoming years
- interested? Email: FCB@tauw.nl
- Video impression: <https://youtu.be/VjkIRLD0hCg>



share your talent. move the world.

More Info?

LinkedIn

ResearchGate

Twitter

Effective international knowledge exchange to rehabilitate rivers in urban delta's case study Metropolitan Manila

Philo Bousquet*, Ben Mollart, Michaela van den Berg

ABSTRACT

Effective international knowledge exchange to rehabilitate rivers in urban delta's case study Metropolitan Manila

INTRODUCTION

Metropolitan Manila is a densely populated urban area with a long history of river rehabilitation. The city's rivers are a vital part of its water supply and drainage system. However, due to rapid urbanization and industrialization, the rivers have become increasingly polluted and degraded. This paper discusses the challenges of river rehabilitation in urban delta's and the role of international knowledge exchange in addressing these challenges.

CONCLUSIONS

The study concludes that international knowledge exchange is essential for the successful rehabilitation of rivers in urban delta's. The study also highlights the importance of community participation and the need for a multi-sectoral approach to river rehabilitation.

share your talent. move the world.